

FRONT SPRING COMPONENTS AND SHOCK ABSORBERS CJ-5,6,7,8, SCRAMBLER

Figure 2-500

81J02 500

ITEM	PART NUMBER	QTY	BODY	MODEL	DESCRIPTION
1					SHOCK ABSORBER
					1981
	J813 3289	2			Standard Duty
	J813 3290	2			Heavy Duty, EXPORT
					1982-86
	J813 4102	2			Limited, Soft Ride
	J813 4100	2			Standard Duty
	J813 4101	2			Heavy Duty, EXPORT
	8350 0176	2			Severe Use
2	J448 8495	4			WASHER
3	J400 4311	4			NUT
4	J063 7936	4			BUSHING
5					PLATE
					1981
	J535 9012	1			Right
	J535 9011	1			Left
					1982-86
	J536 4022	1			Right
	J536 4021	1			Left
6	J942 1085	8			NUT
7	J535 0644	8			WASHER
8	J535 3851	2			BUSHING
9	J400 3979	4			NUT
10	S941 9209	2			BOLT
11	J535 5689	2			BRACKET
12	J018 0147	4			WASHER
13	J400 4809	4			BOLT
14					SHACKLE
	J535 7620	2			1981
15	J535 5966	8			BUSHING
16					PLATE
	J535 7497	2			1981
17					NUT, Lock
	S941 6532	4			1981
18					U-BOLT ***
	J813 0369	4			3.06" Wide
	J813 0370	4			3.75" Wide
19					PLATE
	J536 4404	4			1982-86

MODEL CODES

16=Cherokee 2 Dr.(1981-83)	78=Cherokee 4WD-4 Dr.(1984-86)	64=Comanche 2WD-6 Ft. Box(1986)	25=J-10 Truck 7 Ft. Box(1981-84)
17=Cherokee 2 Dr.(1981-83)	85=CJ-5 (1981-83)	66=Comanche 2WD-7 Ft. Box(1986)	26=J10 Truck 8 Ft. Box(1981-86)
73=Cherokee 2WD-2 Dr.(1984-86)	86=CJ-6(1981)	63=Comanche 4WD-6 Ft. Box(1986)	27=J-20 Truck 8 Ft. Box(1981-86)
74=Cherokee 2WD-4 Dr.(1984-86)	87=CJ-7(1981-86)	65=Comanche 4WD-7 Ft. Box(1986)	15=Wagoneer 4 Dr.(1981-83)
18=Cherokee 4 Dr.(1981-83)	88=CJ-8, Scrambler(1981-86)	15=Grand Wagoneer 4 Dr.(1984-86)	75=Wagoneer 4WD-4 Dr.(1984-86)
77=Cherokee 4WD-2 Dr.(1984-86)			

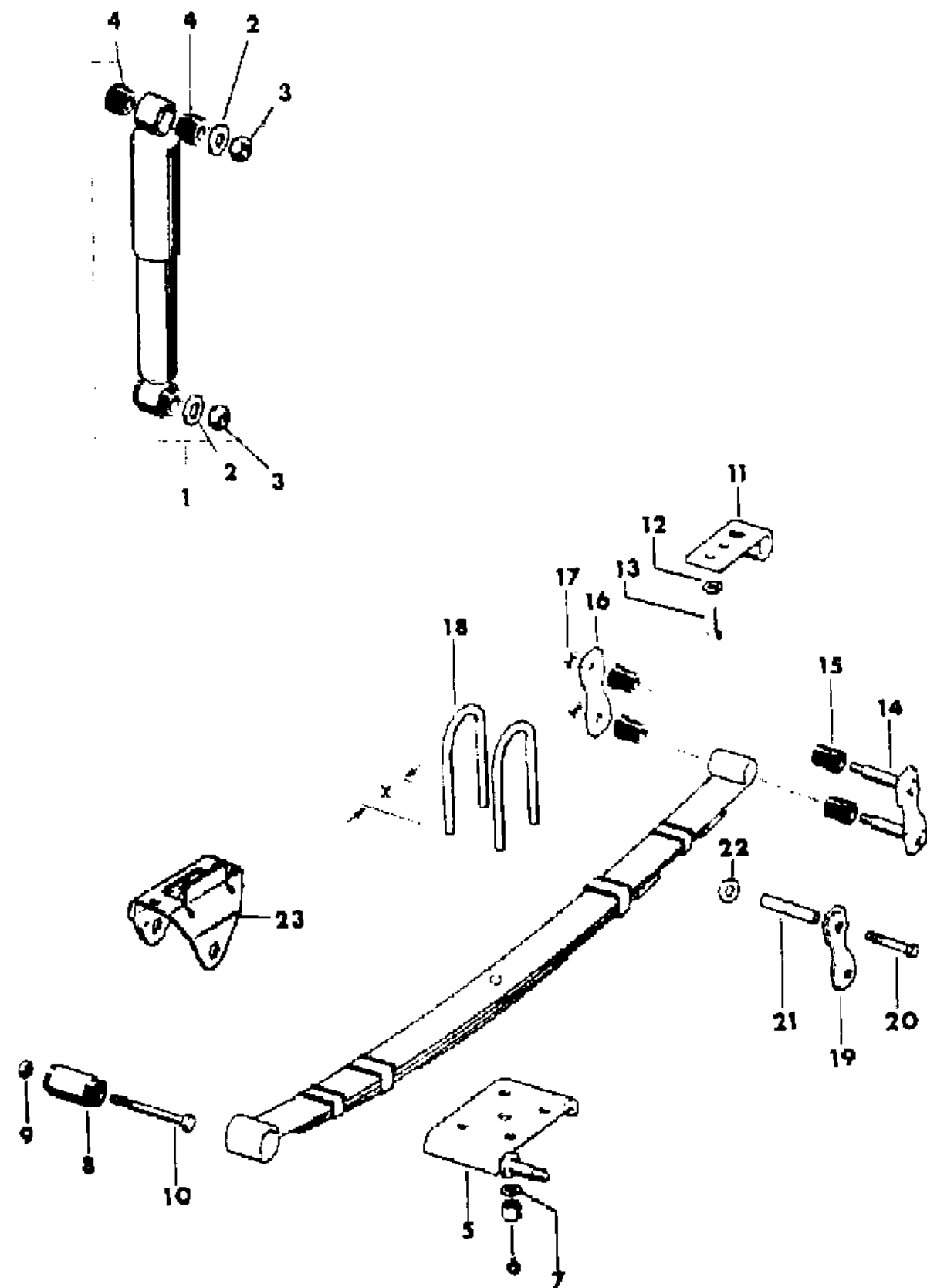
BODY

CJ=CJ-5, CJ-6, CJ-7, CJ-8, Scrambler(1981-86)  
MJ=Comanche Pickup(1986)

STYLES

SJ=Wagoneer(1981-83), Grand Wagoneer(1984-86),  
Cherokee(1981-83), J-10, J-20(1981-86)  
XJ=Wagoneer(1984-86), Cherokee(1984-86)

AR = Use as Required - = Non Illustrated Part P.A.R. = Paint as Required

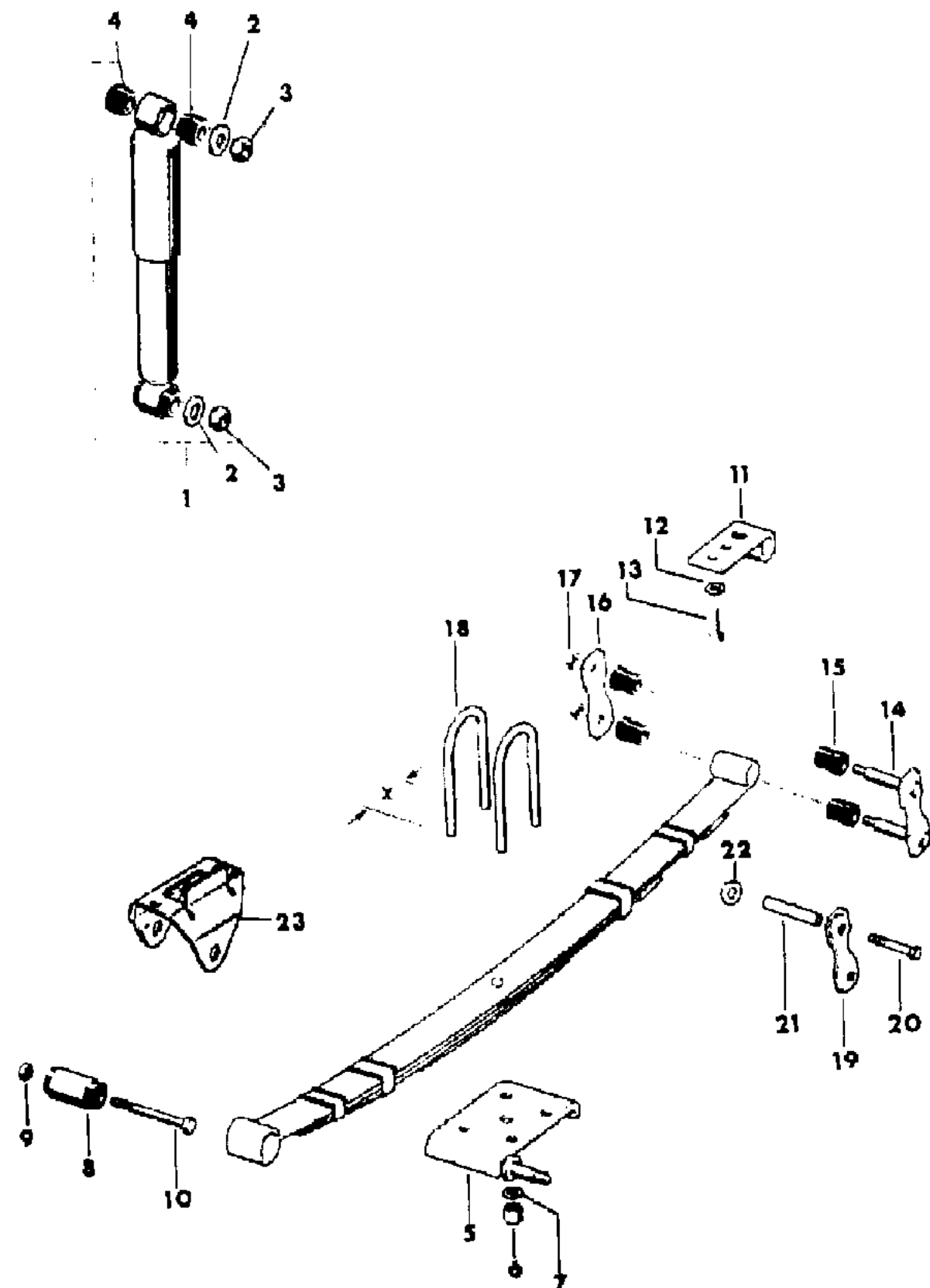


FRONT SPRING COMPONENTS AND SHOCK ABSORBERS CJ-5,6,7,8, SCRAMBLER

Figure 2-500

81J02 500

ITEM	PART NUMBER	QTY	BODY	MODEL	DESCRIPTION
20					BOLT
	S941 8072	4			1982-86
21					TUBE
	J536 4405	4			1982-86
22					NUT
	S941 3266	4			1982-86
23					BRACKET, Front Spring Mounting
	J535 5689	2			Front
	J812 7712	2			Rear



MODEL CODES

16=Cherokee 2 Dr.(1981-83)	78=Cherokee 4WD-4 Dr.(1984-86)	64=Comanche 2WD-6 Ft. Box(1986)	25=J-10 Truck 7 Ft. Box(1981-84)
17=Cherokee 2 Dr.(1981-83)	85=CJ-5 (1981-83)	66=Comanche 2WD-7 Ft. Box(1986)	26=J10 Truck 8 Ft. Box(1981-86)
73=Cherokee 2WD-2 Dr.(1984-86)	86=CJ-6(1981)	63=Comanche 4WD-6 Ft. Box(1986)	27=J-20 Truck 8 Ft. Box(1981-86)
74=Cherokee 2WD-4 Dr.(1984-86)	87=CJ-7(1981-86)	65=Comanche 4WD-7 Ft. Box(1986)	15=Wagoneer 4 Dr.(1981-83)
18=Cherokee 4 Dr.(1981-83)	88=CJ-8, Scrambler(1981-86)	15=Grand Wagoneer 4 Dr.(1984-86)	75=Wagoneer 4WD-4 Dr.(1984-86)
77=Cherokee 4WD-2 Dr.(1984-86)			

BODY

CJ=CJ-5, CJ-6, CJ-7, CJ-8, Scrambler(1981-86)  
MJ=Comanche Pickup(1986)

STYLES

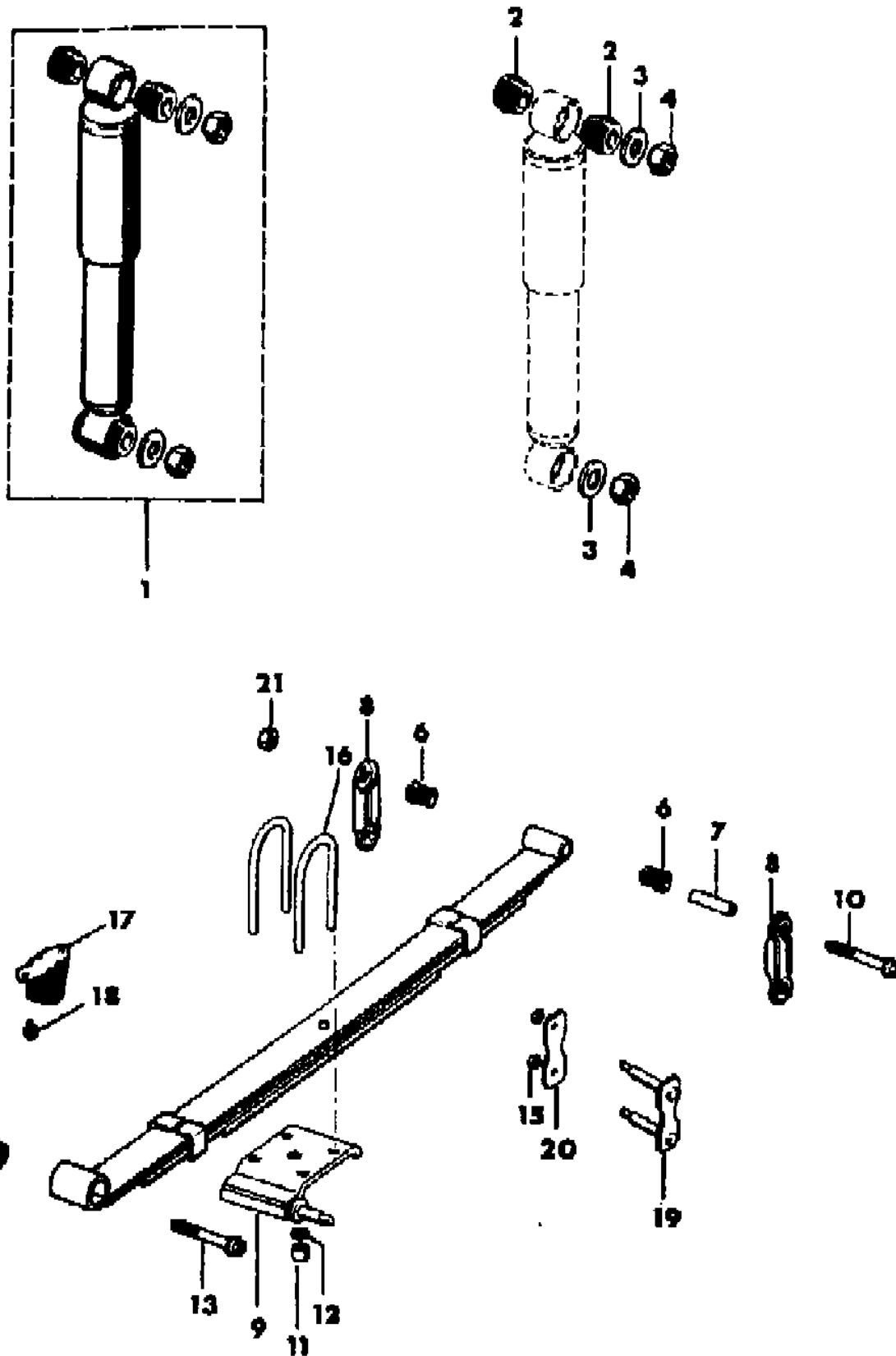
SJ=Wagoneer(1981-83), Grand Wagoneer(1984-86),  
Cherokee(1981-83), J-10, J-20(1981-86)  
XJ=Wagoneer(1984-86), Cherokee(1984-86)

AR = Use as Required - = Non Illustrated Part P.A.R. = Paint as Required

SUSPENSION, REAR WITH SHOCK ABSORBER CJ-5,6,7,8, SCRAMBLER

Figure 17-100

81J17 100



ITEM	PART NUMBER	QTY	BODY	MODEL	DESCRIPTION
1					SHOCK ABSORBER PACKAGE
					Standard Duty
	J813 3294	2			1981: Stamped 5353217
	J813 3848	2			1981: Stamped 5363751
	J813 3838	2			1982-86
					Soft Ride
	J813 4105	2	87		1982-86: Limited
	J813 3295	2			Heavy Duty
	J813 3839	2			1981
					Extra Heavy Duty
	J813 3296	2			1982-86
	J813 3840	2			1981
					Severe Use
	8350 0177	2	87,88		1983-86: EXPORT
2	J063 7936	4			BUSHING
3	J448 8495	AR			WASHER
4	J400 4311	AR			NUT, Lock
5	J535 5369	2			BUSHING
6	J535 5841	8			BUSHING
7					TUBE
	J536 4406	4			1982-86: Used with Shackle that requires two Hex Head Mounting Bolts
8					PLATE
	J536 4404	4			1982-86: Used with Shackle that requires two Hex Head Mounting Bolts
9					PLATE
	J535 9008	1			Right
	J536 3440	1			1981
	5505 2682	1			1982-86: Used with 12 Bolt Rear Axle Cover (AMC Axle)
					1986: Used with 10 Bolt Rear Axle Cover (Dana Axle)
	J535 9007	1			Left
	J536 3439	1			1981
	5505 2681	1			1982-86: Used with 12 Bolt Rear Axle Cover (AMC Axle)
					1986: Used with 10 Bolt Rear Axle Cover (Dana Axle)
10	J045 6958	4			BOLT
11	J942 1085	8			NUT
12	J400 4808	8			WASHER
13	J941 9209	2			BOLT

MODEL CODES

16=Cherokee 2 Dr.(1981-83)	78=Cherokee 4WD-4 Dr.(1984-86)	64=Comanche 2WD-6 Ft. Box(1986)	25=J-10 Truck 7 Ft. Box(1981-84)
17=Cherokee 2 Dr.(1981-83)	85=CJ-5 (1981-83)	66=Comanche 2WD-7 Ft. Box(1986)	26=J10 Truck 8 Ft. Box(1981-86)
73=Cherokee 2WD-2 Dr.(1984-86)	86=CJ-6(1981)	63=Comanche 4WD-6 Ft. Box(1986)	27=J-20 Truck 8 Ft. Box(1981-86)
74=Cherokee 2WD-4 Dr.(1984-86)	87=CJ-7(1981-86)	65=Comanche 4WD-7 Ft. Box(1986)	15=Wagoneer 4 Dr.(1981-83)
18=Cherokee 4 Dr.(1981-83)	88=CJ-8, Scrambler(1981-86)	15=Grand Wagoneer 4 Dr.(1984-86)	75=Wagoneer 4WD-4 Dr.(1984-86)
77=Cherokee 4WD-2 Dr.(1984-86)			

BODY

CJ=CJ-5, CJ-6, CJ-7, CJ-8, Scrambler(1981-86)  
MJ=Comanche Pickup(1986)

STYLES

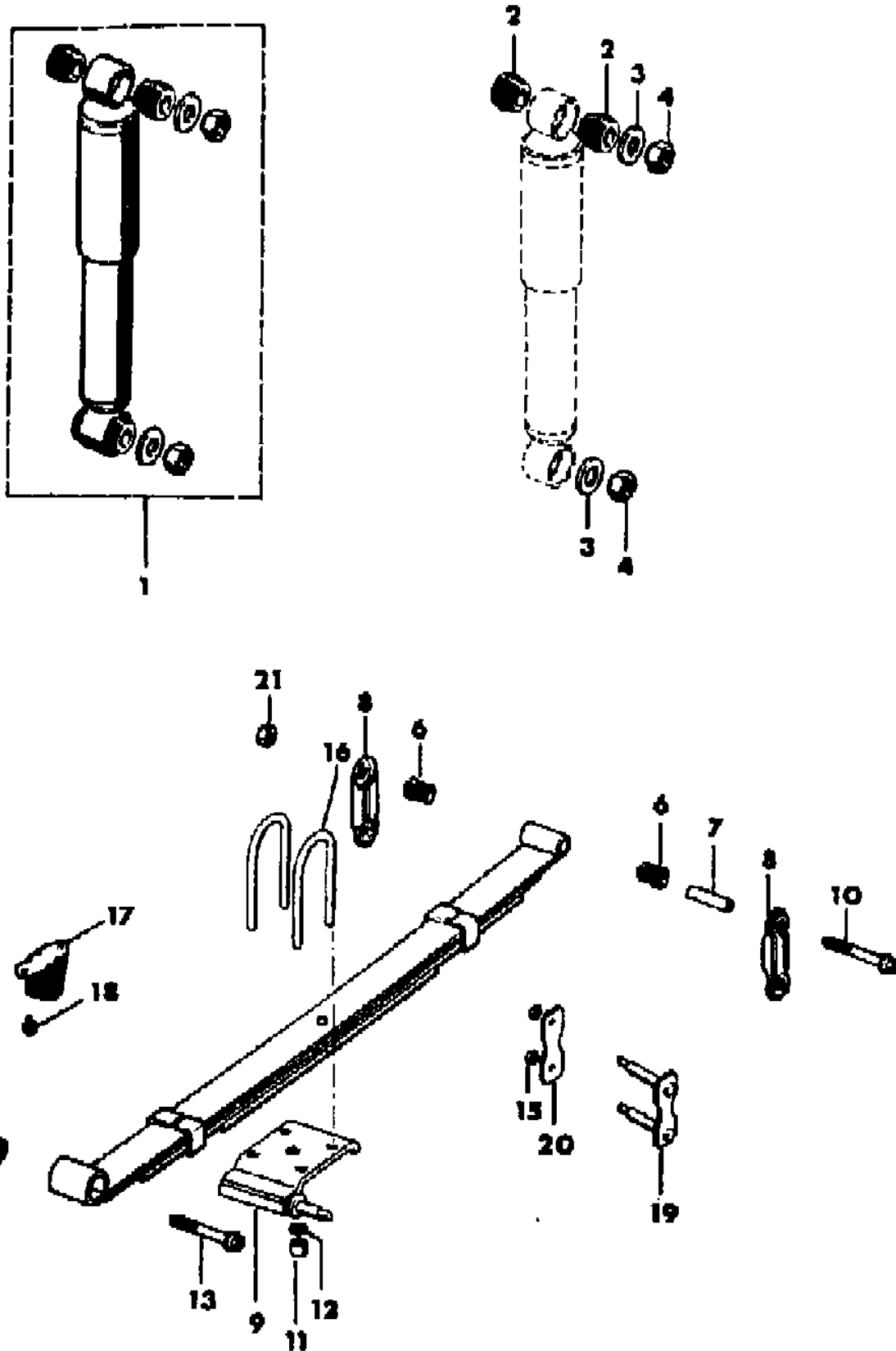
SJ=Wagoneer(1981-83), Grand Wagoneer(1984-86),  
Cherokee(1981-83), J-10, J-20(1981-86)  
XJ=Wagoneer(1984-86), Cherokee(1984-86)

AR = Use as Required - = Non Illustrated Part P.A.R. = Paint as Required

SUSPENSION, REAR WITH SHOCK ABSORBER CJ-5,6,7,8, SCRAMBLER

Figure 17-100

81J17 100



ITEM	PART NUMBER	QTY	BODY	MODEL	DESCRIPTION
14	J400 3979	2			NUT
15	J941 6532	8			NUT 1981-82
16	J813 0369	4			U-BOLT
17	J535 5483	2			BUMPER
18	J400 5063	4			SCREW
19	J535 7499	2			SHACKLE
20	J535 7497	2			PLATE
21	S941 3266	4			NUT 1982-86

MODEL CODES

16=Cherokee 2 Dr.(1981-83)	78=Cherokee 4WD-4 Dr.(1984-86)	64=Comanche 2WD-6 Ft. Box(1986)	25=J-10 Truck 7 Ft. Box(1981-84)
17=Cherokee 2 Dr.(1981-83)	85=CJ-5 (1981-83)	66=Comanche 2WD-7 Ft. Box(1986)	26=J10 Truck 8 Ft. Box(1981-86)
73=Cherokee 2WD-2 Dr.(1984-86)	86=CJ-6(1981)	63=Comanche 4WD-6 Ft. Box(1986)	27=J-20 Truck 8 Ft. Box(1981-86)
74=Cherokee 2WD-4 Dr.(1984-86)	87=CJ-7(1981-86)	65=Comanche 4WD-7 Ft. Box(1986)	15=Wagoneer 4 Dr.(1981-83)
18=Cherokee 4 Dr.(1981-83)	88=CJ-8, Scrambler(1981-86)	15=Grand Wagoneer 4 Dr.(1984-86)	75=Wagoneer 4WD-4 Dr.(1984-86)
77=Cherokee 4WD-2 Dr.(1984-86)			

BODY

CJ=CJ-5, CJ-6, CJ-7, CJ-8, Scrambler(1981-86)  
MJ=Comanche Pickup(1986)

STYLES

SJ=Wagoneer(1981-83), Grand Wagoneer(1984-86),  
Cherokee(1981-83), J-10, J-20(1981-86)  
XJ=Wagoneer(1984-86), Cherokee(1984-86)

AR = Use as Required - = Non Illustrated Part P.A.R. = Paint as Required